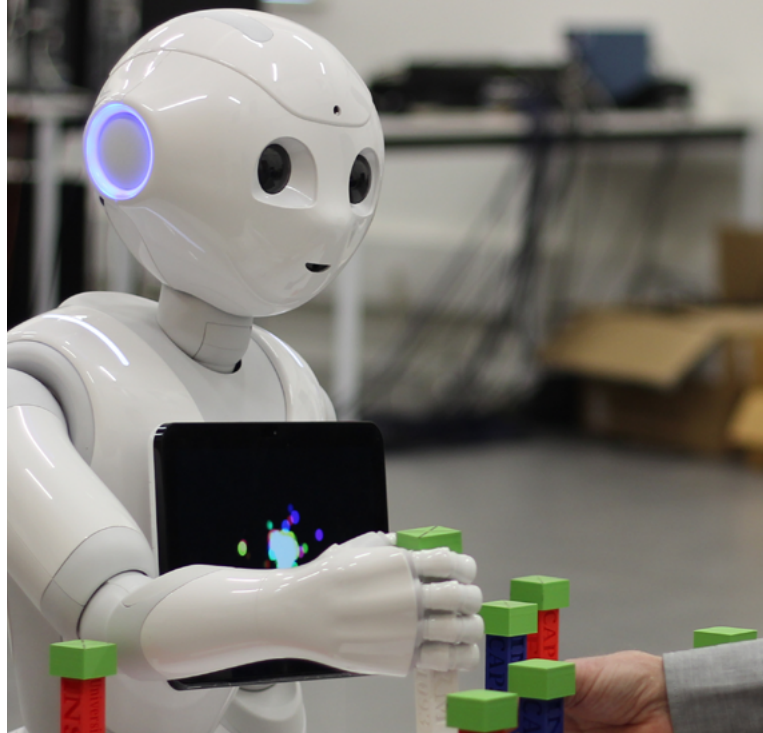




Shaping  
our *future*  
together

A European  
university



## KEY FIGURES

**5%**

UBE ranks among  
the top 5% of  
universities  
worldwide\*

**15<sup>th</sup>**

best student city  
(2024-2025  
*L'Étudiant* ranking)

**6**

Campuses:  
Auxerre, Dijon  
Chalon-sur-Saône,  
Le Creusot,  
Mâcon, Nevers

**€242**

million  
budget

*\*Shanghai Ranking*



**300** years of history  
**40,000** students  
**2,900** staff members  
**400** programs  
**16** faculties  
**2** engineering schools  
**1** management school  
**1** *institut de la vigne et du vin*  
**1** UNESCO chair  
**31** laboratories, **29** research platforms  
**1,600** researchers, **985** PhD students,  
**30** researchers at the IUF (Institut Universitaire de France)  
**13** libraries

**Founded 300 years ago, *Université de Bourgogne* opened a new chapter in its history when it became *Université Bourgogne Europe* on January 1, 2025.**

Together with 11 higher education and research institutions in the Bourgogne-Franche-Comté area (ENSAD and ESM as constituent institutions; BSB Dijon, ESTP, ESEO, CESI, ESAAB, CHU, and CGFL as associated institutions; and the Science Po Dijon campus and Crous BFC as partner institutions), *Université Bourgogne Europe* is advancing an ambitious and unifying project to address today's and tomorrow's societal and regional challenges.

As a multidisciplinary university, UBE offers more than 400 programs across 16 faculties, including two engineering schools and a public institute of management. The university draws on the expertise of 31 research laboratories.

Future-oriented and globally connected, UBE actively contributes to change and development both within its region and beyond.



**AUXERRE**  
close to 1,100 students

**DIJON**  
close to  
30,000 students

**NEVERS**  
close to 2,000 students

**CHALON-SUR-SAÔNE**  
close to 600 students

**LE CREUSOT**  
close to 1,500 students

**MÂCON**  
close to 400 students

UBE comprises six campuses spread across Burgundy's four *départements*, along with 11 partner institutions. From archaeology to AI, oenology to ecological transition—each of our sites is intricately connected to the economic and social fabric of its environment.



**ensadijon**  
École nationale  
supérieure  
d'art & design  
de Dijon

**BSB**  
BURGUNDY SCHOOL OF BUSINESS

**CESI**  
ÉCOLE D'INGÉNIEURS

**CCFL**  
CENTRE DE RECHERCHE  
ÉCONOMIQUE, DÉMOCRATIQUE & SOCIALE

**CHU**  
DIJON  
BOURGOGNE

**ésaab**  
École supérieure  
d'architecture  
de Bourgogne

**eseo**  
GRANDE ÉCOLE D'INGÉNIEURS

**estp**  
ÉCOLE SUPÉRIEURE  
DES TRONÇONS D'ARTS ET MÉTIERS

**Crous**  
Bourgogne

**SciencesPo**  
CAMPUS DE DIJON





*Share*  
what you know,  
*Seek*  
what you don't\*

*\*Motto inscribed on one of the first buildings  
of the Dijon campus*

## THE AMBITION THAT UNITES US ALL

*Université Bourgogne Europe* has a history marked by transformation. A pillar of resilience, it has turned challenges into strengths by raising its research and education to new levels in order to meet the challenges of tomorrow.

UBE enjoys international recognition and stands among the world's leading universities in rankings such as Leiden, Times Higher Education, and Shanghai. Several of its researchers are included in Stanford University's World's Top 2% Scientists list. The university has distinguished itself in cutting-edge fields such as food science, mathematics, health, and ecology.

With 31 research facilities, a vibrant network of over 900 PhD students, and a community of 1,600 research professors, UBE is committed to producing high-quality research by making a multidisciplinary approach one of its major strengths. More than 40,000 students study and connect within faculties that offer over 400 programs.



Optimistic and future-oriented, UBE plays a key role in regional development and transition, guided by a research strategy built on four innovation-driven areas:

- Technological transitions, smart and sustainable materials
- Land, environment, food, and climate
- Systemic and integrated approaches to health
- Arts, culture, and humanities in society

Beyond fostering knowledge, the university is dedicated to enhancing and transferring research results for the benefit of society. Its research—driven by local, national, and international collaborations—contributes to addressing societal and environmental challenges while preparing the researchers and experts of tomorrow.

By offering access to diverse, high-quality education, our university and its partners prepare the citizens of tomorrow to become active members of society. By joining forces locally and across Europe, we multiply our influence.



**2,870** international students



**120** nationalities



More than **350** international partners

More than **800** cooperative agreements in **64** countries



## GLOBALLY CONNECTED

European and international policy is one of the major priorities of *Université Bourgogne Europe*, enabling all our students and staff to benefit from numerous opportunities in terms of mobility and a welcoming environment.

UBE is a founding member of the European FORTHEN Alliance, offering its entire community opportunities to learn and gain experience at eight partner universities (Jyväskylä, Agder, Riga, Opole, Mainz, Palermo, Sibiu, and Valencia).

UBE also offers wider international opportunities to its community through some 350 global partnerships, including Université Laval, Hiroshima University, and the University of Edinburgh.





## COMMITTED TO THE FUTURE

The Dijon campus stands out as France's leading sports campus. Beyond academics, our university provides a vibrant program of cultural and sporting events each year, welcoming students and staff alike. With an American-style campus, UBE hosts hundreds of shows and events at our cultural center known as the *atheneum*. Art shines in all its forms across our artistic works and scientific collections.

Rooted in its region, UBE plays an active role in public debate and community life. With nearly 140 student associations led by committed and motivated young people, UBE serves as a true incubator for innovative initiatives and projects. Among them, the *Commission de Solidarité Étudiante*—the first of its kind in France—brings together academic, non-profit, and institutional stakeholders to support students in need and promote mutual aid. UBE is also committed to the environment through its sustainable campus unit.





Since inclusion is central to our commitment, UBE is a disability-friendly university, supporting nearly 600 students through personalized services such as academic accommodations, adapted housing, dedicated advisors, and more.

Here, everyone belongs. UBE is a place of higher learning and personal growth, where we shape the future together. More than just a university, it is a springboard for personal achievement.

**235** events

**50** sports activities

**140** associations

**594** students supported by  
*Mission Handicap* services

- **CSE** (*Commission Solidarité Étudiante*) unique in France
- *Petite fac* : 1<sup>st</sup> **university day-care centre**
- **1 Disability** Action Plan
- **1 Sustainable Development and Social Responsibility** Plan
- An **EcoJardin**-certified campus
- **Atypical-friendly** institution

# *Let's come together to build the next century*

**The *Fondation de l'Université Bourgogne Europe* is engaged in a range of fields that are vital to the future of society, such as :**

- Innovation, research, and education
- Student learning and quality of life
- The institution's prestige
- Teaching practices and knowledge transfer
- Scientific, technical, and cultural heritage
- Entrepreneurship in the academic community
- Development of an alumni network
- International cooperation

The Foundation calls on everyone to get involved by bringing their projects and ideas, mobilizing all who share its values and vision, and who wish to contribute to the advancement of knowledge, culture, and progress.

UNIVERSITÉ  
BOURGOGNE  
EUROPE







[www.ube.fr](http://www.ube.fr)

Université Bourgogne Europe  
Maison de l'Université  
Esplanade Erasme  
BP 27877 - 21078 Dijon Cedex